

(Chapter 15)(Waves)

XI

Exercises

Question 15.1:

A string of mass 2.50 kg is under a tension of 200 N. The length of the stretched string is 20.0 m. If the transverse jerk is struck at one end of the string, how long does the disturbance take to reach the other end?

Answer

Mass of the string, $M = 2.50$ kg

Tension in the string, $T = 200$ N

Length of the string, $l = 20.0$ m

Mass per unit length, $\mu = \frac{M}{l} = \frac{2.50}{20} = 0.125 \text{ kg m}^{-1}$

The velocity (v) of the transverse wave in the string is given by the relation:

$$v = \sqrt{\frac{T}{\mu}}$$
$$= \sqrt{\frac{200}{0.125}} = \sqrt{1600} = 40 \text{ m/s}$$

∴ Time taken by the disturbance to reach the other end, $t = \frac{l}{v} = \frac{20}{40} = 0.50 \text{ s}$

Question 15.2:

A stone dropped from the top of a tower of height 300 m high splashes into the water of a pond near the base of the tower. When is the splash heard at the top given that the speed of sound in air is 340 m s⁻¹? ($g = 9.8 \text{ m s}^{-2}$)

Answer

Height of the tower, $s = 300$ m



Initial velocity of the stone, $u = 0$

Acceleration, $a = g = 9.8 \text{ m/s}^2$

Speed of sound in air = 340 m/s

The time (t_1) taken by the stone to strike the water in the pond can be calculated using the second equation of motion, as:

$$s = ut_1 + \frac{1}{2}gt_1^2$$

$$300 = 0 + \frac{1}{2} \times 9.8 \times t_1^2$$

$$\therefore t_1 = \sqrt{\frac{300 \times 2}{9.8}} = 7.82 \text{ s}$$

Time taken by the sound to reach the top of the tower, $t_2 = \frac{300}{340} = 0.88 \text{ s}$

Therefore, the time after which the splash is heard, $t = t_1 + t_2$

$$= 7.82 + 0.88 = 8.7 \text{ s}$$

Question 15.3:

A steel wire has a length of 12.0 m and a mass of 2.10 kg. What should be the tension in the wire so that speed of a transverse wave on the wire equals the speed of sound in dry air at $20^\circ\text{C} = 343 \text{ m s}^{-1}$.

Answer

Length of the steel wire, $l = 12 \text{ m}$

Mass of the steel wire, $m = 2.10 \text{ kg}$

Velocity of the transverse wave, $v = 343 \text{ m/s}$

Mass per unit length, $\mu = \frac{m}{l} = \frac{2.10}{12} = 0.175 \text{ kg m}^{-1}$

For tension T , velocity of the transverse wave can be obtained using the relation:

$$v = \sqrt{\frac{T}{\mu}}$$

$$\therefore T = v^2 \mu$$

$$= (343)^2 \times 0.175 = 20588.575 \approx 2.06 \times 10^4 \text{ N}$$

Question 15.4:

$$v = \sqrt{\frac{\gamma P}{\rho}}$$

Use the formula $v = \sqrt{\frac{\gamma P}{\rho}}$ to explain why the speed of sound in air is independent of pressure, increases with temperature, increases with humidity.

Answer

Take the relation:

$$v = \sqrt{\frac{\gamma P}{\rho}} \quad \dots (i)$$

Where,

$$\text{Density, } \rho = \frac{\text{Mass}}{\text{Volume}} = \frac{M}{V}$$

M = Molecular weight of the gas

V = Volume of the gas

Hence, equation (i) reduces to:

$$v = \sqrt{\frac{\gamma PV}{M}} \quad \dots (ii)$$

Now from the ideal gas equation for $n = 1$:

$$PV = RT$$

For constant T , $PV = \text{Constant}$

Since both M and γ are constants, $v = \text{Constant}$

Hence, at a constant temperature, the speed of sound in a gaseous medium is independent of the change in the pressure of the gas.

Take the relation:

$$v = \sqrt{\frac{\gamma P}{\rho}} \quad \dots (i)$$

For one mole of an ideal gas, the gas equation can be written as:

$$PV = RT$$

$$P = \frac{RT}{V} \quad \dots (ii)$$

Substituting equation (ii) in equation (i), we get:

$$v = \sqrt{\frac{\gamma RT}{V\rho}} = \sqrt{\frac{\gamma RT}{M}} \quad \dots (iv)$$

Where,

Mass, $M = \rho V$ is a constant

γ and R are also constants

We conclude from equation (iv) that $v \propto \sqrt{T}$.

Hence, the speed of sound in a gas is directly proportional to the square root of the temperature of the gaseous medium, i.e., the speed of the sound increases with an increase in the temperature of the gaseous medium and vice versa.

Let v_m and v_d be the speeds of sound in moist air and dry air respectively.

Let ρ_m and ρ_d be the densities of moist air and dry air respectively.

Take the relation:

$$v = \sqrt{\frac{\gamma P}{\rho}}$$

Hence, the speed of sound in moist air is:

$$v_m = \sqrt{\frac{\gamma P}{\rho_m}} \quad \dots (i)$$

And the speed of sound in dry air is:

$$v_d = \sqrt{\frac{\gamma P}{\rho_d}} \quad \dots (ii)$$

On dividing equations (i) and (ii), we get:

$$\frac{v_m}{v_d} = \sqrt{\frac{\gamma P}{\rho_m} \times \frac{\rho_d}{\gamma P}} = \sqrt{\frac{\rho_d}{\rho_m}}$$

However, the presence of water vapour reduces the density of air, i.e.,

$$\rho_d < \rho_m$$

$$\therefore v_m > v_d$$

Hence, the speed of sound in moist air is greater than it is in dry air. Thus, in a gaseous medium, the speed of sound increases with humidity.

Question 15.5:

You have learnt that a travelling wave in one dimension is represented by a function $y = f(x, t)$ where x and t must appear in the combination $x - vt$ or $x + vt$, i.e. $y = f(x \pm vt)$. Is the converse true? Examine if the following functions for y can possibly represent a travelling wave:

$$(x - vt)^2$$
$$\log \left[\frac{x + vt}{x_0} \right]$$
$$\frac{1}{(x + vt)}$$

Answer: No;

Does not represent a wave

Represents a wave

Does not represent a wave

The converse of the given statement is not true. The essential requirement for a function to represent a travelling wave is that it should remain finite for all values of x and t .

Explanation:

For $x = 0$ and $t = 0$, the function $(x - vt)^2$ becomes 0.

Hence, for $x = 0$ and $t = 0$, the function represents a point and not a wave.

For $x = 0$ and $t = 0$, the function

$$\log \left(\frac{x + vt}{x_0} \right) = \log 0 = \infty$$

Since the function does not converge to a finite value for $x = 0$ and $t = 0$, it represents a travelling wave.



For $x = 0$ and $t = 0$, the function

$$\frac{1}{x + vt} = \frac{1}{0} = \infty$$

Since the function does not converge to a finite value for $x = 0$ and $t = 0$, it does not represent a travelling wave.

Question 15.6:

A bat emits ultrasonic sound of frequency 1000 kHz in air. If the sound meets a water surface, what is the wavelength of (a) the reflected sound, (b) the transmitted sound? Speed of sound in air is 340 m s⁻¹ and in water 1486 m s⁻¹.

Answer

Frequency of the ultrasonic sound, $\nu = 1000 \text{ kHz} = 10^6 \text{ Hz}$

Speed of sound in air, $v_a = 340 \text{ m/s}$

The wavelength (λ_r) of the reflected sound is given by the relation:

$$\begin{aligned}\lambda_r &= \frac{v}{\nu} \\ &= \frac{340}{10^6} = 3.4 \times 10^{-4} \text{ m}\end{aligned}$$

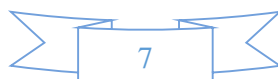
Frequency of the ultrasonic sound, $\nu = 1000 \text{ kHz} = 10^6 \text{ Hz}$

Speed of sound in water, $v_w = 1486 \text{ m/s}$

The wavelength of the transmitted sound is given as:

$$\lambda_t = \frac{1486}{10^6} = 1.49 \times 10^{-3} \text{ m}$$

Question 15.7:



A hospital uses an ultrasonic scanner to locate tumours in a tissue. What is the wavelength of sound in the tissue in which the speed of sound is 1.7 km s^{-1} ? The operating frequency of the scanner is 4.2 MHz.

Answer

Speed of sound in the tissue, $v = 1.7 \text{ km/s} = 1.7 \times 10^3 \text{ m/s}$ Operating

frequency of the scanner, $\nu = 4.2 \text{ MHz} = 4.2 \times 10^6 \text{ Hz}$ The wavelength of

sound in the tissue is given as:

$$\lambda = \frac{v}{\nu}$$

$$= \frac{1.7 \times 10^3}{4.2 \times 10^6} = 4.1 \times 10^{-4} \text{ m}$$

Question 15.8:

A transverse harmonic wave on a string is described by

$$y(x, t) = 3.0 \sin\left(36t + 0.018x + \frac{\pi}{4}\right)$$

Where x and y are in cm and t in s. The positive direction of x is from left to right.

Is this a travelling wave or a stationary wave?

If it is travelling, what are the speed and direction of its propagation?

What are its amplitude and frequency?

What is the initial phase at the origin?

What is the least distance between two successive crests in the wave?

Answer:

Yes; Speed = 20 m/s, Direction = Right to left

3 cm; 5.73 Hz

$$\frac{\pi}{4}$$

3.49 m

Explanation:

The equation of a progressive wave travelling from right to left is given by the displacement function:

$y(x, t) = a \sin(\omega t + kx + \Phi) \dots (i)$ The given

equation is:

$$y(x, t) = 3.0 \sin\left(36t + 0.018x + \frac{\pi}{4}\right) \dots (ii)$$

On comparing both the equations, we find that equation (ii) represents a travelling wave, propagating from right to left.

Now, using equations (i) and (ii), we can write:

$\omega = 36 \text{ rad/s}$ and $k = 0.018 \text{ m}^{-1}$ We know

that:

$$v = \frac{\omega}{2\pi} \text{ and } \lambda = \frac{2\pi}{k}$$

Also, $v = v\lambda$

$$\begin{aligned}\therefore v &= \left(\frac{\omega}{2\pi}\right) \times \left(\frac{2\pi}{k}\right) = \frac{\omega}{k} \\ &= \frac{36}{0.018} = 2000 \text{ cm/s} = 20 \text{ m/s}\end{aligned}$$

Hence, the speed of the given travelling wave is 20 m/s.

Amplitude of the given wave, $a = 3$ cm
Frequency of the given wave:

$$v = \frac{\omega}{2\pi} = \frac{36}{2 \times 3.14} = 5.73 \text{ Hz}$$

On comparing equations (i) and (ii), we find that the initial phase angle, $\phi = \frac{\pi}{4}$

The distance between two successive crests or troughs is equal to the wavelength of the wave.

Wavelength is given by the relation:

$$k = \frac{2\pi}{\lambda}$$

$$\therefore \lambda = \frac{2\pi}{k} = \frac{2 \times 3.14}{0.018} = 348.89 \text{ cm} = 3.49 \text{ m}$$

Question 15.9:

For the wave described in Exercise 15.8, plot the displacement (y) versus (t) graphs for $x = 0, 2$ and 4 cm. What are the shapes of these graphs? In which aspects does the oscillatory motion in travelling wave differ from one point to another: amplitude, frequency or phase?

Answer

All the waves have different phases.

The given transverse harmonic wave is:

$$y(x, t) = 3.0 \sin\left(36t + 0.018x + \frac{\pi}{4}\right) \quad \dots(i)$$

For $x = 0$, the equation reduces to:

$$y(0, t) = 3.0 \sin\left(36t + \frac{\pi}{4}\right)$$

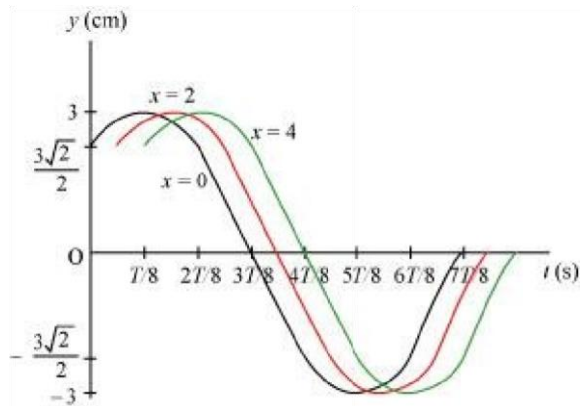
$$\text{Also, } \omega = \frac{2\pi}{T} = 36 \text{ rad/s}^{-1}$$

$$\therefore T = \frac{\pi}{8} \text{ s}$$

Now, plotting y vs. t graphs using the different values of t , as listed in the given table.

t (s)	0	$\frac{T}{8}$	$\frac{2T}{8}$	$\frac{3T}{8}$	$\frac{4T}{8}$	$\frac{5T}{8}$	$\frac{6T}{8}$	$\frac{7T}{8}$
y (cm)	$\frac{3\sqrt{2}}{2}$	3	$\frac{3\sqrt{2}}{2}$	0	$\frac{-3\sqrt{2}}{2}$	-3	$\frac{-3\sqrt{2}}{2}$	0

For $x = 0$, $x = 2$, and $x = 4$, the phases of the three waves will get changed. This is because amplitude and frequency are invariant for any change in x . The y - t plots of the three waves are shown in the given figure.



Question 15.10:

For the travelling harmonic wave $y(x, t) = 2.0 \cos$

$$2\pi (10t - 0.0080x + 0.35)$$

Where x and y are in cm and t in s. Calculate the phase difference between oscillatory motion of two points separated by a distance of

4 m, 0.5 m,

$$\frac{\lambda}{2}, \frac{3\lambda}{4}$$

Answer

Equation for a travelling harmonic wave is given as:

$$y(x, t) = 2.0 \cos 2\pi (10t - 0.0080x + 0.35)$$

$$= 2.0 \cos (20\pi t - 0.016\pi x + 0.70\pi)$$

Where,

Propagation constant, $k = 0.0160\pi$

Amplitude, $a = 2 \text{ cm}$

Angular frequency, $\omega = 20 \pi \text{ rad/s}$

Phase difference is given by the relation:

$$\phi = kx = \frac{2\pi}{\lambda}$$

For $x = 4 \text{ m} = 400 \text{ cm}$

$$\Phi = 0.016 \pi \times 400 = 6.4 \pi \text{ rad}$$

For $0.5 \text{ m} = 50 \text{ cm}$

$$\Phi = 0.016 \pi \times 50 = 0.8 \pi \text{ rad}$$

$$\text{For } x = \frac{\lambda}{2}$$

$$\phi = \frac{2\pi}{\lambda} \times \frac{\lambda}{2} = \pi \text{ rad}$$

$$\text{For } x = \frac{3\lambda}{4}$$

$$\phi = \frac{2\pi}{\lambda} \times \frac{3\lambda}{4} = 1.5\pi \text{ rad}$$

Question 15.11:

The transverse displacement of a string (clamped at its both ends) is given by

$$y(x, t) = 0.06 \sin \frac{2}{3} x \cos (120 \pi t)$$

Where x and y are in m and t in s. The length of the string is 1.5 m and its mass is $3.0 \times 10^{-2} \text{ kg}$.

Answer the following:

Does the function represent a travelling wave or a stationary wave?

Interpret the wave as a superposition of two waves travelling in opposite directions. What is the wavelength, frequency, and speed of each wave?

Determine the tension in the string.

Answer

The general equation representing a stationary wave is given by the displacement function:

$$y(x, t) = 2a \sin kx \cos \omega t$$

This equation is similar to the given equation:

$$y(x, t) = 0.06 \sin\left(\frac{2}{3}x\right) \cos(120\pi t)$$

Hence, the given function represents a stationary wave.

A wave travelling along the positive x -direction is given as:

$$y_1 = a \sin(\omega t - kx)$$

The wave travelling along the negative x -direction is given as:

$$y_2 = a \sin(\omega t + kx)$$

The superposition of these two waves yields:

$$\begin{aligned} y &= y_1 + y_2 = a \sin(\omega t - kx) + a \sin(\omega t + kx) \\ &= a \sin(\omega t) \cos(kx) + a \sin(kx) \cos(\omega t) + a \sin(\omega t) \cos(kx) + a \sin(kx) \cos(\omega t) \\ &= 2a \sin(kx) \cos(\omega t) \\ &= 2a \sin\left(\frac{2\pi}{\lambda}x\right) \cos(2\pi \nu t) \quad \dots (i) \end{aligned}$$

The transverse displacement of the string is given as:

$$y(x,t) = 0.06 \sin\left(\frac{2\pi}{3}x\right) \cos(120\pi t) \quad \dots (ii)$$

Comparing equations (i) and (ii), we have:

$$\frac{2\pi}{\lambda} = \frac{2\pi}{3}$$

∴ Wavelength, $\lambda = 3$ m

It is given that:

$$120\pi = 2\pi\nu$$

Frequency, $\nu = 60$ Hz

Wave speed, $v = \nu\lambda$

$$= 60 \times 3 = 180 \text{ m/s}$$

The velocity of a transverse wave travelling in a string is given by the relation:

$$v = \sqrt{\frac{T}{\mu}} \quad \dots (i)$$

Where,

Velocity of the transverse wave, $v = 180$ m/s

Mass of the string, $m = 3.0 \times 10^{-2}$ kg

Length of the string, $l = 1.5$ m

Mass per unit length of the string, $\mu = \frac{m}{l}$

$$= \frac{3.0}{1.5} \times 10^{-2}$$

$$= 2 \times 10^{-2} \text{ kg m}^{-1}$$

Tension in the string = T

From equation (i), tension can be obtained as:

$$T = v^2 \mu$$

$$= (180)^2 \times 2 \times 10^{-2}$$

$$= 648 \text{ N}$$

Question 15.12:

For the wave on a string described in Exercise 15.11, do all the points on the string oscillate with the same (a) frequency, (b) phase, (c) amplitude? Explain your answers. (ii) What is the amplitude of a point 0.375 m away from one end?

Answer:

(i)

Yes, except at the nodes Yes, except at

the nodes

No

0.042 m

Explanation:

(i)

All the points on the string oscillate with the same frequency, except at the nodes which have zero frequency.

All the points in any vibrating loop have the same phase, except at the nodes.

All the points in any vibrating loop have different amplitudes of vibration.

The given equation is:

$$y(x, t) = 0.06 \sin\left(\frac{2\pi}{3}x\right) \cos(120\pi t)$$

For $x = 0.375$ m and $t = 0$

$$\begin{aligned} \text{Amplitude} = \text{Displacement} &= 0.06 \sin\left(\frac{2\pi}{3}x\right) \cos 0 \\ &= 0.06 \sin\left(\frac{2\pi}{3} \times 0.375\right) \times 1 \\ &= 0.06 \sin(0.25\pi) = 0.06 \sin\left(\frac{\pi}{4}\right) \\ &= 0.06 \times \frac{1}{\sqrt{2}} = 0.042 \text{ m} \end{aligned}$$

Question 15.13:

Given below are some functions of x and t to represent the displacement (transverse or longitudinal) of an elastic wave. State which of these represent (i) a traveling wave, (ii) a stationary wave or (iii) none at all:

$$y = 2 \cos(3x) \sin(10t)$$

$$y = 2\sqrt{x-vt}$$

$$y = 3 \sin(5x - 0.5t) + 4 \cos(5x - 0.5t) \quad y = \cos x$$

$$\sin t + \cos 2x \sin 2t$$

Answer

The given equation represents a stationary wave because the harmonic terms kx and ωt appear separately in the equation.

The given equation does not contain any harmonic term. Therefore, it does not represent either a travelling wave or a stationary wave.

The given equation represents a travelling wave as the harmonic terms kx and ωt are in the combination of $kx - \omega t$.

The given equation represents a stationary wave because the harmonic terms kx and ωt appear separately in the equation. This equation actually represents the superposition of two stationary waves.

Question 15.14:

A wire stretched between two rigid supports vibrates in its fundamental mode with a frequency of 45 Hz. The mass of the wire is 3.5×10^{-2} kg and its linear mass density is 4.0×10^{-2} kg m⁻¹. What is (a) the speed of a transverse wave on the string, and (b) the tension in the string?

Answer

Mass of the wire, $m = 3.5 \times 10^{-2}$ kg

Linear mass density, $\mu = \frac{m}{l} = 4.0 \times 10^{-2}$ kg m⁻¹

Frequency of vibration, $\nu = 45$ Hz

∴ Length of the wire, $l = \frac{m}{\mu} = \frac{3.5 \times 10^{-2}}{4.0 \times 10^{-2}} = 0.875$ m

The wavelength of the stationary wave (λ) is related to the length of the wire by the relation:

$$\lambda = \frac{2l}{n}$$

Where, n = Number of nodes in the wire

For fundamental node, $n = 1$:

$$\lambda = 2l \quad \lambda = 2 \times 0.875 = 1.75 \text{ m}$$

The speed of the transverse wave in the string is given as:

$$v = v\lambda = 45 \times 1.75 = 78.75 \text{ m/s}$$

The tension produced in the string is given by the relation:

$$T = v^2\mu$$

$$= (78.75)^2 \times 4.0 \times 10^{-2} = 248.06 \text{ N}$$

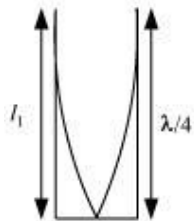
Question 15.15:

A metre-long tube open at one end, with a movable piston at the other end, shows resonance with a fixed frequency source (a tuning fork of frequency 340 Hz) when the tube length is 25.5 cm or 79.3 cm. Estimate the speed of sound in air at the temperature of the experiment. The edge effects may be neglected.

Answer

Frequency of the turning fork, $\nu = 340 \text{ Hz}$

Since the given pipe is attached with a piston at one end, it will behave as a pipe with one end closed and the other end open, as shown in the given figure.



Such a system produces odd harmonics. The fundamental note in a closed pipe is given by the relation:

$$l_1 = \frac{\lambda}{4}$$

Where,

Length of the pipe, $l_1 = 25.5 \text{ cm} = 0.255 \text{ m}$

$$\therefore \lambda = 4l_1 = 4 \times 0.255 = 1.02 \text{ m}$$

The speed of sound is given by the relation:

$$v = v\lambda = 340 \times 1.02 = 346.8 \text{ m/s}$$

Question 15.16:

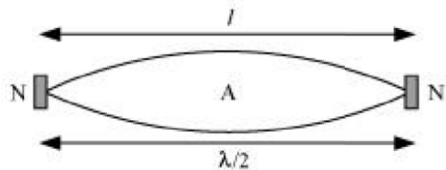
A steel rod 100 cm long is clamped at its middle. The fundamental frequency of longitudinal vibrations of the rod is given to be 2.53 kHz. What is the speed of sound in steel?

Answer

Length of the steel rod, $l = 100 \text{ cm} = 1 \text{ m}$

Fundamental frequency of vibration, $\nu = 2.53 \text{ kHz} = 2.53 \times 10^3 \text{ Hz}$

When the rod is plucked at its middle, an antinode (A) is formed at its centre, and nodes (N) are formed at its two ends, as shown in the given figure.



The distance between two successive nodes is $\frac{\lambda}{2}$.

$$\therefore l = \frac{\lambda}{2}$$

$$\lambda = 2l = 2 \times 1 = 2 \text{ m}$$

The speed of sound in steel is given by the relation:

$$\begin{aligned}
 v &= v\lambda \\
 &= 2.53 \times 10^3 \times 2 \\
 &= 5.06 \times 10^3 \text{ m/s} \\
 &= 5.06 \text{ km/s}
 \end{aligned}$$

Question 15.17:

A pipe 20 cm long is closed at one end. Which harmonic mode of the pipe is resonantly excited by a 430 Hz source? Will the same source be in resonance with the pipe if both ends are open? (Speed of sound in air is 340 m s^{-1}).

Answer: First (Fundamental); No

Length of the pipe, $l = 20 \text{ cm} = 0.2 \text{ m}$

Source frequency = n^{th} normal mode of frequency, $\nu_n = 430 \text{ Hz}$

Speed of sound, $v = 340 \text{ m/s}$

In a closed pipe, the n^{th} normal mode of frequency is given by the relation:

$$\nu_n = (2n - 1) \frac{v}{4l} \quad ; \quad n \text{ is an integer} = 0, 1, 2, 3, \dots$$

$$430 = (2n - 1) \frac{340}{4 \times 0.2}$$

$$2n - 1 = \frac{430 \times 4 \times 0.2}{340} = 1.01$$

$$2n = 2.01$$

$$n \sim 1$$

Hence, the first mode of vibration frequency is resonantly excited by the given source.

In a pipe open at both ends, the n^{th} mode of vibration frequency is given by the relation:

$$v_n = \frac{nv}{2l}$$

$$n = \frac{2lv_n}{v}$$

$$= \frac{2 \times 0.2 \times 430}{340} = 0.5$$

Since the number of the mode of vibration (n) has to be an integer, the given source does not produce a resonant vibration in an open pipe.

Question 15.18:

Two sitar strings A and B playing the note 'Ga' are slightly out of tune and produce beats of frequency 6 Hz. The tension in the string A is slightly reduced and the beat frequency is found to reduce to 3 Hz. If the original frequency of A is 324 Hz, what is the frequency of B?

Answer

Frequency of string A, $f_A = 324$ Hz

Frequency of string B = f_B

Beat's frequency, $n = 6$ Hz

Beat's frequency is given as:

$$n = |f_A \pm f_B|$$

$$6 = 324 \pm f_B$$

$$f_B = 330\text{Hz or } 318\text{ Hz}$$

Frequency decreases with a decrease in the tension in a string. This is because frequency is directly proportional to the square root of tension. It is given as:

$$v \propto \sqrt{T}$$

Hence, the beat frequency cannot be 330 Hz

$$\therefore f_B = 318\text{Hz}$$

Question 15.19:

Explain why (or how):

- In a sound wave, a displacement node is a pressure antinode and vice versa,
- Bats can ascertain distances, directions, nature, and sizes of the obstacles without any “eyes”,
- A violin note and sitar note may have the same frequency, yet we can distinguish between the two notes,
- Solids can support both longitudinal and transverse waves, but only longitudinal waves can propagate in gases, and
- The shape of a pulse gets distorted during propagation in a dispersive medium.

Answer

A node is a point where the amplitude of vibration is the minimum and pressure is the maximum. On the other hand, an antinode is a point where the amplitude of vibration is the maximum and pressure is the minimum.

Therefore, a displacement node is nothing but a pressure antinode, and vice versa.

Bats emit very high-frequency ultrasonic sound waves. These waves get reflected back toward them by obstacles. A bat receives a reflected wave (frequency) and estimates the distance, direction, nature, and size of an obstacle with the help of its brain senses.

The overtones produced by a sitar and a violin, and the strengths of these overtones, are different. Hence, one can distinguish between the notes produced by a sitar and a violin even if they have the same frequency of vibration.

Solids have shear modulus. They can sustain shearing stress. Since fluids do not have any definite shape, they yield to shearing stress. The propagation of a transverse wave is such that it produces shearing stress in a medium. The propagation of such a wave is possible only in solids, and not in gases.

Both solids and fluids have their respective bulk moduli. They can sustain compressive stress. Hence, longitudinal waves can propagate through solids and fluids.

A pulse is actually is a combination of waves having different wavelengths. These waves travel in a dispersive medium with different velocities, depending on the nature of the medium. This results in the distortion of the shape of a wave pulse.

Question 15.20:

A train, standing at the outer signal of a railway station blows a whistle of frequency 400 Hz in still air. (i) What is the frequency of the whistle for a platform observer when the train (a) approaches the platform with a speed of 10 m s^{-1} , (b) recedes from the platform with a speed of 10 m s^{-1} ? (ii) What is the speed of sound in each case? The speed of sound in still air can be taken as 340 m s^{-1} .

Answer

(a) Frequency of the whistle, $\nu = 400 \text{ Hz}$

Speed of the train, $\nu_T = 10 \text{ m/s}$

Speed of sound, $\nu = 340 \text{ m/s}$

The apparent frequency (ν') of the whistle as the train approaches the platform is given by the relation:

$$\nu' = \left(\frac{v}{v - v_T} \right) \nu$$

$$= \left(\frac{340}{340 - 10} \right) \times 400 = 412.12 \text{ Hz}$$

The apparent frequency (ν'') of the whistle as the train recedes from the platform is given by the relation:

$$\nu'' = \left(\frac{v}{v + v_T} \right) \nu$$

$$= \left(\frac{340}{340 + 10} \right) \times 400 = 388.57 \text{ Hz}$$

The apparent change in the frequency of sound is caused by the relative motions of the source and the observer. These relative motions produce no effect on the speed of sound. Therefore, the speed of sound in air in both the cases remains the same, i.e., 340 m/s.

Question 15.21:

A train, standing in a station-yard, blows a whistle of frequency 400 Hz in still air. The wind starts blowing in the direction from the yard to the station with at a speed of 10 m s^{-1} . What are the frequency, wavelength, and speed of sound for an observer standing on the station's platform? Is the situation exactly identical to the case when the air is still and the observer runs towards the yard at a speed of 10 m s^{-1} ? The speed of sound in still air can be taken as 340 m s^{-1} .

Answer

For the stationary observer: 400 Hz; 0.875 m; 350 m/s

For the running observer: Not exactly identical

For the stationary observer:

Frequency of the sound produced by the whistle, $\nu = 400$ Hz

Speed of sound = 340 m/s

Velocity of the wind, $v = 10$ m/s

As there is no relative motion between the source and the observer, the frequency of the sound heard by the observer will be the same as that produced by the source, i.e., 400 Hz.

The wind is blowing toward the observer. Hence, the effective speed of the sound increases by 10 units, i.e.,

Effective speed of the sound, $v_e = 340 + 10 = 350$ m/s

The wavelength (λ) of the sound heard by the observer is given by the relation:

$$\lambda = \frac{v_e}{\nu} = \frac{350}{400} = 0.875 \text{ m}$$

For the running observer:

Velocity of the observer, $v_o = 10$ m/s

The observer is moving toward the source. As a result of the relative motions of the source and the observer, there is a change in frequency (ν').

This is given by the relation:

$$\nu' = \left(\frac{v + v_o}{v} \right) \nu$$

$$= \left(\frac{340 + 10}{340} \right) \times 400 = 411.76 \text{ Hz}$$

Since the air is still, the effective speed of sound = $340 + 0 = 340$ m/s

The source is at rest. Hence, the wavelength of the sound will not change, i.e., λ remains 0.875 m.

Hence, the given two situations are not exactly identical.

Physics

(Chapter 15)(Waves)

XI

Additional Exercises

Question 15.22:

A travelling harmonic wave on a string is described by

$$y(x, t) = 7.5 \sin\left(0.0050x + 12t + \frac{\pi}{4}\right)$$

What are the displacement and velocity of oscillation of a point at $x = 1$ cm, and $t = 1$ s? Is this velocity equal to the velocity of wave propagation?

Locate the points of the string which have the same transverse displacements and velocity as the $x = 1$ cm point at $t = 2$ s, 5 s and 11 s.

Answer

The given harmonic wave is:

$$y(x, t) = 7.5 \sin\left(0.0050x + 12t + \frac{\pi}{4}\right)$$

For $x = 1$ cm and $t = 1$ s,

$$y = (1, 1) = 7.5 \sin\left(0.0050 + 12 + \frac{\pi}{4}\right)$$

$$= 7.5 \sin\left(12.0050 + \frac{\pi}{4}\right)$$

$$= 7.5 \sin \theta$$

$$\text{Where, } \theta = 12.0050 + \frac{\pi}{4} = 12.0050 + \frac{3.14}{4} = 12.79 \text{ rad}$$

$$= \frac{180}{3.14} \times 12.79 = 732.81^\circ$$

$$\therefore y = (1, 1) = 7.5 \sin(732.81^\circ)$$

$$= 7.5 \sin(90 \times 8 + 12.81^\circ) = 7.5 \sin 12.81^\circ$$

$$= 7.5 \times 0.2217$$

$$= 1.6629 \approx 1.663 \text{ cm}$$

The velocity of the oscillation at a given point and time is given as:

$$v = \frac{d}{dt} y(x, t) = \frac{d}{dt} \left[7.5 \sin \left(0.0050x + 12t + \frac{\pi}{4} \right) \right]$$
$$= 7.5 \times 12 \cos \left(0.0050x + 12t + \frac{\pi}{4} \right)$$

At $x = 1$ cm and $t = 1$ s:

$$v = y(1, 1) = 90 \cos \left(12.005 + \frac{\pi}{4} \right)$$
$$= 90 \cos(732.81^\circ) = 90 \cos(90 \times 8 + 12.81^\circ)$$
$$= 90 \cos(12.81^\circ)$$
$$= 90 \times 0.975 = 87.75 \text{ cm/s}$$

Now, the equation of a propagating wave is given by:

$$y(x, t) = a \sin(kx + \omega t + \phi)$$

Where,

$$k = \frac{2\pi}{\lambda}$$

$$\therefore \lambda = \frac{2\pi}{k}$$

And $\omega = 2\pi \nu$

$$\therefore \nu = \frac{\omega}{2\pi}$$

$$\text{Speed, } v = \nu \lambda = \frac{\omega}{k}$$

Where,

$$\omega = 12 \text{ rad/s}$$

$$k = 0.0050 \text{ m}^{-1}$$

$$\therefore v = \frac{12}{0.0050} = 2400 \text{ cm/s}$$

Hence, the velocity of the wave oscillation at $x = 1 \text{ cm}$ and $t = 1 \text{ s}$ is not equal to the velocity of the wave propagation.

Propagation constant is related to wavelength as:

$$k = \frac{2\pi}{\lambda}$$

$$\therefore \lambda = \frac{2\pi}{k} = \frac{2 \times 3.14}{0.0050}$$

$$= 1256 \text{ cm} = 12.56 \text{ m}$$

Therefore, all the points at distances $n\lambda$ ($n = \pm 1, \pm 2, \dots$ and so on), i.e. $\pm 12.56 \text{ m}, \pm 25.12 \text{ m}, \dots$ and so on for $x = 1 \text{ cm}$, will have the same displacement as the $x = 1 \text{ cm}$ points at $t = 2 \text{ s}, 5 \text{ s},$ and 11 s .

Question 15.23:

A narrow sound pulse (for example, a short pip by a whistle) is sent across a medium. (a) Does the pulse have a definite (i) frequency, (ii) wavelength, (iii) speed of propagation? (b) If the pulse rate is 1 after every 20 s, (that is the whistle is blown for a split of second after every 20 s), is the frequency

of the note produced by the whistle equal to $\frac{1}{20}$ or 0.05 Hz?

Answer

(i) No

(ii) No

(iii) Yes

No

Explanation:

The narrow sound pulse does not have a fixed wavelength or frequency. However, the speed of the sound pulse remains the same, which is equal to the speed of sound in that medium.

The short pip produced after every 20 s does not mean that the frequency of the whistle is $\frac{1}{20}$ or 0.05 Hz. It means that 0.05 Hz is the frequency of the repetition of the pip of the whistle.

Question 15.24:

One end of a long string of linear mass density $8.0 \times 10^{-3} \text{ kg m}^{-1}$ is connected to an electrically driven tuning fork of frequency 256 Hz. The other end passes over a pulley and is tied to a pan containing a mass of 90 kg. The pulley end absorbs all the incoming energy so that reflected waves at this end have negligible amplitude. At $t = 0$, the left end (fork end) of the string $x = 0$ has zero transverse displacement ($y = 0$) and is moving along positive y -direction. The amplitude of the wave is 5.0 cm. Write down the transverse displacement y as function of x and t that describes the wave on the string.

Answer

The equation of a travelling wave propagating along the positive y -direction is given by the displacement equation: $y(x, t) = a \sin(\omega t - kx) \dots (i)$

Linear mass density, $\mu = 8.0 \times 10^{-3} \text{ kg m}^{-1}$

Frequency of the tuning fork, $\nu = 256 \text{ Hz}$

Amplitude of the wave, $a = 5.0 \text{ cm} = 0.05 \text{ m} \dots (ii)$

Mass of the pan, $m = 90 \text{ kg}$

Tension in the string, $T = mg = 90 \times 9.8 = 882 \text{ N}$

The velocity of the transverse wave v , is given by the relation:

$$v = \sqrt{\frac{T}{\mu}}$$

$$= \sqrt{\frac{882}{8.0 \times 10^{-3}}} = 332 \text{ m/s}$$

Angular frequency, $\omega = 2\pi\nu$

$$= 2 \times 3.14 \times 256$$

$$= 1608.5 = 1.6 \times 10^3 \text{ rad/s} \quad \dots(iii)$$

Wavelength, $\lambda = \frac{v}{\nu} = \frac{332}{256} \text{ m}$

\therefore Propagation constant, $k = \frac{2\pi}{\lambda}$

$$= \frac{2 \times 3.14}{\frac{332}{256}} = 4.84 \text{ m}^{-1} \quad \dots(iv)$$

Substituting the values from equations (ii), (iii), and (iv) in equation (i), we get the displacement equation:

$$y(x, t) = 0.05 \sin(1.6 \times 10^3 t - 4.84 x) \text{ m}$$

Question 15.25:

A SONAR system fixed in a submarine operates at a frequency 40.0 kHz. An enemy submarine moves towards the SONAR with a speed of 360 km h⁻¹. What is the frequency of sound reflected by the submarine? Take the speed of sound in water to be 1450 m s⁻¹.

Answer

Operating frequency of the SONAR system, $\nu = 40 \text{ kHz}$

Speed of the enemy submarine, $v_e = 360 \text{ km/h} = 100 \text{ m/s}$

Speed of sound in water, $v = 1450 \text{ m/s}$

The source is at rest and the observer (enemy submarine) is moving toward it. Hence, the apparent frequency (ν') received and reflected by the submarine is given by the relation:

$$\nu' = \left(\frac{v + v_e}{v} \right) \nu$$

$$= \left(\frac{1450 + 100}{1450} \right) \times 40 = 42.76 \text{ kHz}$$

The frequency (ν'') received by the enemy submarine is given by the relation:

$$\nu'' = \left(\frac{v}{v + v_s} \right) \nu'$$

Where, $v_s = 100 \text{ m/s}$

$$\therefore \nu'' = \left(\frac{1450}{1450 - 100} \right) \times 42.76 = 45.93 \text{ kHz}$$

Question 15.26:

Earthquakes generate sound waves inside the earth. Unlike a gas, the earth can experience both transverse (S) and longitudinal (P) sound waves. Typically the speed of S wave is about 4.0 km s^{-1} , and that of P wave is 8.0 km s^{-1} . A seismograph records P and S waves from an earthquake. The first P wave arrives 4 min before the first S wave. Assuming the waves travel in straight line, at what distance does the earthquake occur?

Answer

Let v_S and v_P be the velocities of S and P waves respectively.

Let L be the distance between the epicentre and the seismograph.

We have:

$$L = v_S t_S \quad (i)$$

$$L = v_P t_P \quad (ii) \text{ Where,}$$

t_S and t_P are the respective times taken by the S and P waves to reach the seismograph from the epicentre. It is given that:

$$v_P = 8 \text{ km/s} \quad v_S = 4 \text{ km/s}$$

From equations (i) and (ii), we have:

$$v_S t_S = v_P t_P \quad 4t_S = 8 t_P \quad t_S = 2 t_P \quad \text{(iii)}$$

It is also given that: $t_S - t_P = 4$

$$\text{min} = 240 \text{ s} \quad 2t_P - t_P = 240 \quad t_P =$$

$$240$$

$$\text{And } t_S = 2 \times 240 = 480 \text{ s}$$

From equation (ii), we get:

$$L = 8 \times 240$$

$$= 1920 \text{ km}$$

Hence, the earthquake occurs at a distance of 1920 km from the seismograph.

Question 15.27:

A bat is flitting about in a cave, navigating via ultrasonic beeps. Assume that the sound emission frequency of the bat is 40 kHz. During one fast swoop directly toward a flat wall surface, the bat is moving at 0.03 times the speed of sound in air. What frequency does the bat hear reflected off the wall?

Answer

Ultrasonic beep frequency emitted by the bat, $\nu = 40 \text{ kHz}$

Velocity of the bat, $v_b = 0.03 \nu$

Where, v = velocity of sound in air

The apparent frequency of the sound striking the wall is given as:

$$\begin{aligned} \nu' &= \left(\frac{v}{v - v_b} \right) \nu \\ &= \left(\frac{v}{v - 0.03v} \right) \times 40 \\ &= \frac{40}{0.97} \text{ kHz} \end{aligned}$$

This frequency is reflected by the stationary wall ($v_s = 0$) toward the bat.

The frequency (ν'') of the received sound is given by the relation:

$$\begin{aligned} \nu'' &= \left(\frac{v + v_b}{v} \right) \nu' \\ &= \left(\frac{v + 0.03v}{v} \right) \times \frac{40}{0.97} \\ &= \frac{1.03 \times 40}{0.97} = 42.47 \text{ kHz} \end{aligned}$$